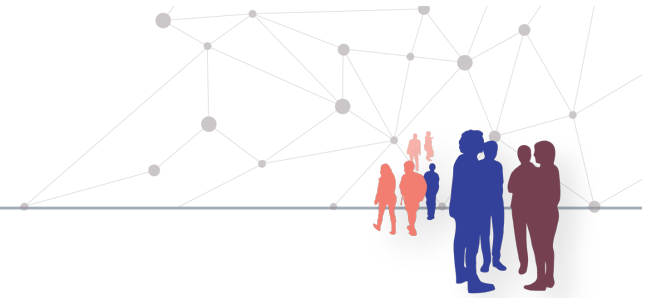




**Universität
Zürich**^{UZH}

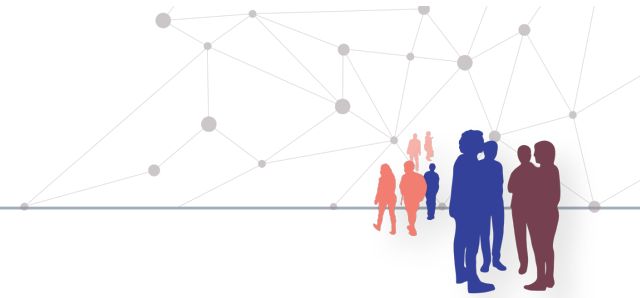
Digital Society Initiative



DSI Info Event – DIZH Project Call

27 September 2022

Markus Christen, Gabriele Prohaska



Agenda

- General information on the DIZH Project Call 2022 (including relevant dates)
- Key Aspects for successful DIZH projects
- Budget & Matching Funds @ UZH
- Discussion
- Further information

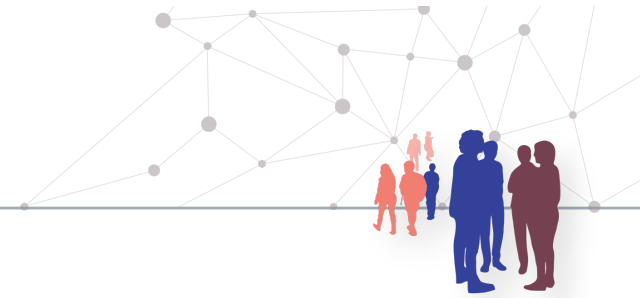


**Universität
Zürich** UZH

Digital Society Initiative

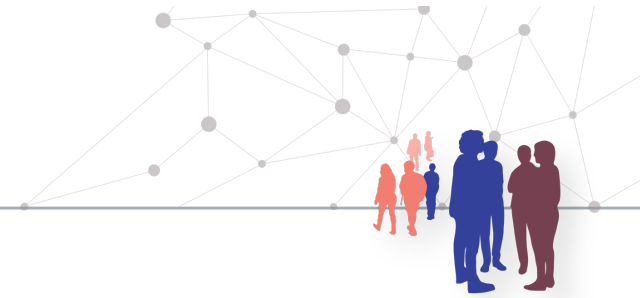


General information on the DIZH Project Call 2022 (including relevant dates)



What is the DIZH Project Call?

- Projects focus on forward-looking and beneficial solutions to relevant questions and problems from **practice** in the context of digital transformation => contribution of practice partner stated in the Letter of intent or (in justified cases) impact on practice
- Projects have a **disruptive** and forward-looking character and pursues radically new approaches
- Projects with different forms of **cooperation** between the participating universities and practice partners => inclusion of at least one more DIZH universities or «super-interdisciplinarity» within one DIZH university
- Duration from **1 to 3 years** and between **CHF 100'000 and CHF 300'000**
- Total project funds available for distribution: **3.5 million CHF**
- **Eligible applicants** need to be employed by one of the 4 DIZH institutions for the period of the proposed project



Relevant dates for the DIZH Project Call 2022

- Fix your **cooperation** with the other DIZH universities latest by **25 October 2022**
- Note: ZHAW and ZHdK have to apply internally for their matching funds latest by **30 October 2022**
- **Application deadline: 4 November 2022 - 12 noon**
- Evaluation until January 2023; final decision **mid February 2023**
- Earliest start of projects: **1 March 2023**
- Latest possible start: **1 September 2023**

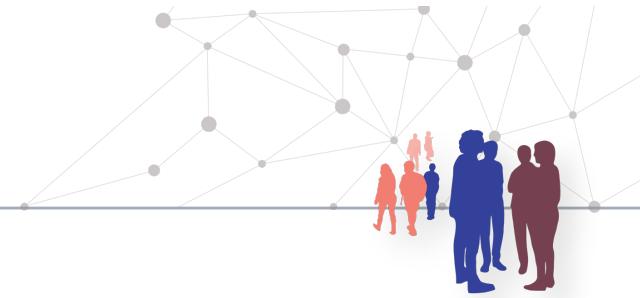


**Universität
Zürich** UZH

Digital Society Initiative



Key Aspects for successful DIZH projects



Key aspects for successful DIZH projects

1. Fulfill **basic requirements**: good to read, within the provided template, maximum length, ...
2. Demonstrate the **impact on Practice (Praxis)**: questions/problems addressed should be relevant for defined stakeholders (not just “academic” questions): Clarify the stakeholder group, sketch a plan how to interact with them, don’t forget outreach activities, etc...
3. Clarify the **innovation** of the project: show how the question/problem is novel and risky (i.e., possibility of failure is not a “killer criterion”)
4. Make sure that the question (and team) is sufficiently **interdisciplinary**: both regarding involved disciplines and DIZH universities.
5. In this call, the focus is on **social, artistic, pedagogical projects or from the humanities**: this concerns both the question/problem addressed and the disciplines represented in the team.

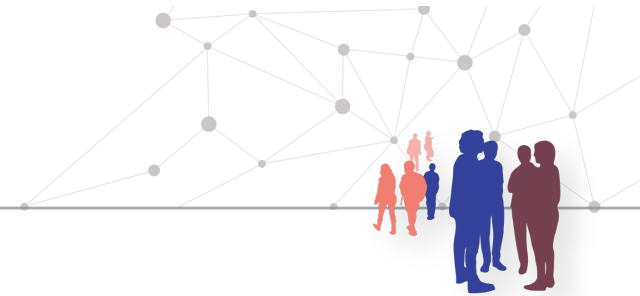


**Universität
Zürich** UZH

Digital Society Initiative

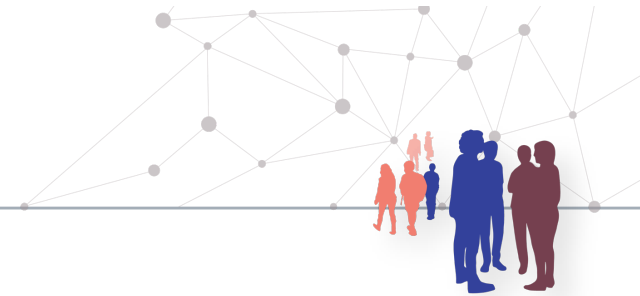


Budget & Matching Funds @ UZH



Budget

- You have to budget the total project first, then decide what should be funded by DIZH (50% of the total project costs) and what is your contribution.
=> Your **own contribution** must be included in the cost section (personal costs, material etc.)
- Calculatory **overhead** (20% of the total project costs) counts as «matching funds»
- **Cost for assets are not allowed**, not even as matching funds. (Asset @ UZH = can be used more than one year and cost more CHF 10'000; everything with a useful live over one year and up to CHF 10'000 is considered as «Device/Equipment» in the DIZH budget template.)
- **Subcontracting** (services from third parties) are only allowed up to CHF 100'000 or the maximum of 20% of the total project costs.
- **Practice partner** can only provide cash contributions (as third-party funds).
- Canton of Zurich expects a 1.9% **increase on salaries** – final decision is due after the call
➔ therefore calculate a lump sum for those increases.



Matching Funds @ UZH

- UZH does **not** provide a pot for Matching Funds, you have to provide it yourself!
- Matching funds can be **in the form of preliminary work from projects related to the submitted project**, dating back no longer than 12 months from the planned starting date

Matching from **university funds = «Redeployment of existing funds»:**

- Direct funds from Betriebskredit, Einrichtungskredit or other university funds from the contributing profit centers or institutes
- Time of researchers/staff funded by Betriebskredit or other university funds; as well: your salary! or from the professor

Matching from **third-party funds = «Third-party funds acquired»** (content must be related and relation must be demonstrated) :

- Direct funds from third-party funds not “earmarked” (not used as matching for other projects)
- Time of researchers/staff funded by third-party funds

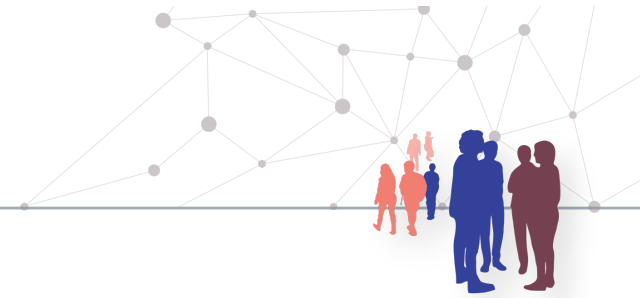


**Universität
Zürich** UZH

Digital Society Initiative



Discussion



Further information

FAQs on general questions:

<https://dizh.ch/en/activities/innovationprogram/f-a-q/>

UZH Contact point for questions:

- General questions: dizh@dsi.uzh.ch
- Questions regarding financial aspects: gabriele.prohaska@uzh.ch
- Questions regarding content & feedback to ideas: markus.christen@dsi.uzh.ch (only in week 39 and week 43/44)